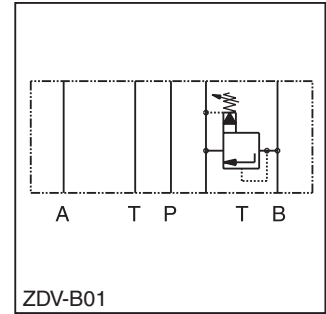


**General Description**

Series ZDV pilot operated pressure relief valves are designed for maximum flow rates.

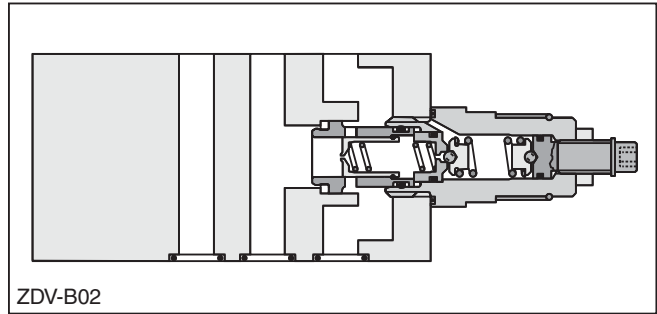
The relief function can be located between P and T, A and T, B and T or A and T + B and T for typical pressure relief functions.

For a pre-charge function the ZDV can be ordered with pressure function between A and B + B and A.



**Features**

- High flow capacity.
- Pressure function in P, A, B or A + B.
- Sizes:
  - ZDV01 – NFPA D03 / NG6 / CETOP 3
  - ZDV02 – NFPA D05 / NG10 / CETOP 5



**Ordering Information**

<b>ZDV</b>	<input type="checkbox"/>	<input type="checkbox"/>	<input type="checkbox"/>	<input type="checkbox"/>	<b>S0</b>	<b>D</b>	<input type="checkbox"/>																		
Pressure Relief Valve	Port Option	Size	Pressure Range	Hexagon Screw with Lock Nut	Design Series	Seal																			
		<table border="1" style="width: 100%; border-collapse: collapse;"> <thead> <tr><th>Code</th><th>Description</th></tr> </thead> <tbody> <tr><td>01</td><td>NFPA D03 / NG6</td></tr> <tr><td>02</td><td>NFPA D05 / NG10</td></tr> </tbody> </table>	Code	Description	01	NFPA D03 / NG6	02	NFPA D05 / NG10	<table border="1" style="width: 100%; border-collapse: collapse;"> <thead> <tr><th>Code</th><th>Description</th></tr> </thead> <tbody> <tr><td>1</td><td>up to 70 Bar (1015 PSI)</td></tr> <tr><td>5*</td><td>up to 350 Bar (5075 PSI)</td></tr> </tbody> </table> <p>* ABS 315 Bar (4568 PSI)</p>	Code	Description	1	up to 70 Bar (1015 PSI)	5*	up to 350 Bar (5075 PSI)			<table border="1" style="width: 100%; border-collapse: collapse;"> <thead> <tr><th>Code</th><th>Description</th></tr> </thead> <tbody> <tr><td>1</td><td>Nitrile</td></tr> <tr><td>5</td><td>Fluorocarbon</td></tr> </tbody> </table>	Code	Description	1	Nitrile	5	Fluorocarbon	
Code	Description																								
01	NFPA D03 / NG6																								
02	NFPA D05 / NG10																								
Code	Description																								
1	up to 70 Bar (1015 PSI)																								
5*	up to 350 Bar (5075 PSI)																								
Code	Description																								
1	Nitrile																								
5	Fluorocarbon																								

Code	Size	Description
P	01/02	P – T
A	01/02	A – T
B	01/02	B – T
AB	01/02	A – T & B – T
ABS	01/02	A – B & B – A

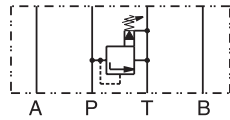
<b>Weight:</b>	<b>One Cartridge</b>	<b>Two Cartridges</b>
ZDV*01	1.6 kg (3.5 lbs.)	2.5 kg (5.5 lbs.)
ZDV*02	3.0 kg (6.6 lbs.)	3.7 kg (8.2 lbs.)



**Ordering Information**

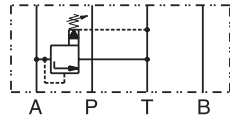
**ZDV01**

Pressure control P-T



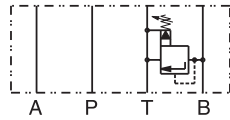
Series  
 ZDVP011S0D1  
 ZDVP015S0D1

Pressure control A-T



Series  
 ZDVA011S0D1  
 ZDVA015S0D1

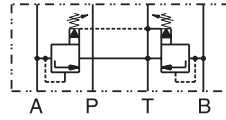
Pressure control B-T



Series  
 ZDVB011S0D1  
 ZDVB015S0D1

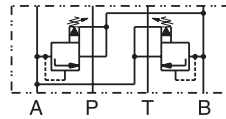
1 = 7 ... 70 Bar (102 ... 1015 PSI)  
 5 = 7 ... 350 Bar (102 ... 5075 PSI)

Pressure control A-T & B-T



Series  
 ZDVAB011S0D1  
 ZDVAB015S0D1

Pressure control A-B & B-A

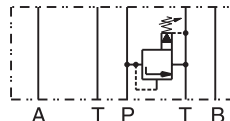


Series  
 ZDVABS011S0D1  
 ZDVABS015S0D1

1 = 7 ... 70 Bar (102 ... 1015 PSI)  
 5 = 7 ... 315 Bar (102 ... 4568 PSI)

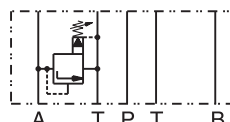
**ZDV02**

Pressure control P-T



Series  
 ZDVP021S0D1  
 ZDVP025S0D1

Pressure control A-T



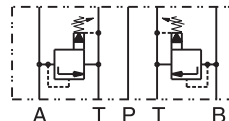
Series  
 ZDVA021S0D1  
 ZDVA025S0D1

Pressure control B-T



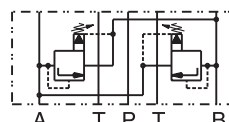
Series  
 ZDVB021S0D1  
 ZDVB025S0D1

Pressure control A-T & B-T



Series  
 ZDVAB021S0D1  
 ZDVAB025S0D1

Pressure control A-B & B-A



Series  
 ZDVABS021S0D1  
 ZDVABS025S0D1

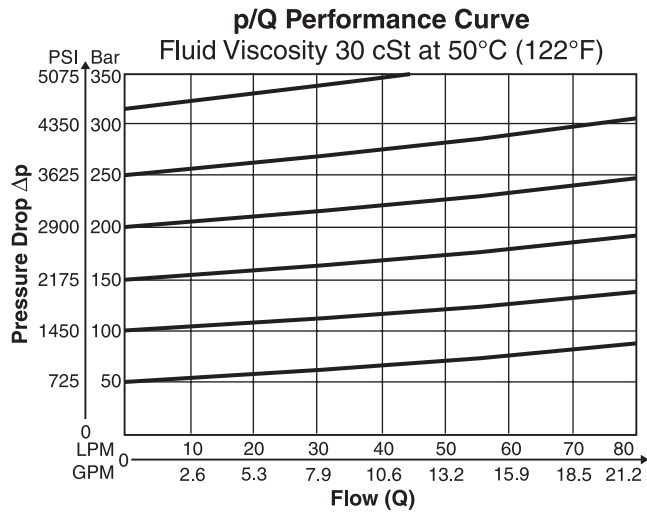
**Specifications**

General		NG6	NG10
<b>Size</b>			
<b>Mounting</b>		DIN 24340 A6 ISO 4401 NFPA D03 CETOP RP 121	DIN 24340 A10 ISO 4401 NFPA D05 CETOP RP 121
<b>Mounting Position</b>		Unrestricted	
<b>Ambient Temperature Range</b>		-20° to +50°C (-4°F to +122°F)	
Hydraulic			
<b>Maximum Operating Pressure</b>		up to 350 Bar (5075 PSI); ZDV*ABS up to 315 Bar (4568 PSI)	
<b>Nominal Flow</b>		80 LPM (21.2 GPM)	140 LPM (37.0 GPM)
<b>Fluid</b>		Hydraulic oil as per DIN 51524 ... 51525	
<b>Fluid Temperature</b>		-20° to +80°C (-4°F to +176°F)	
<b>Viscosity</b>	<b>Permitted Recommended</b>	10 to 650 cSt / mm <sup>2</sup> /s (46 to 3013 SSU) 30 cSt / mm <sup>2</sup> /s (139 SSU)	
<b>Filtration</b>		ISO Class 4406 (1999) 18/16/13 (acc. NAS 1638: 7)	

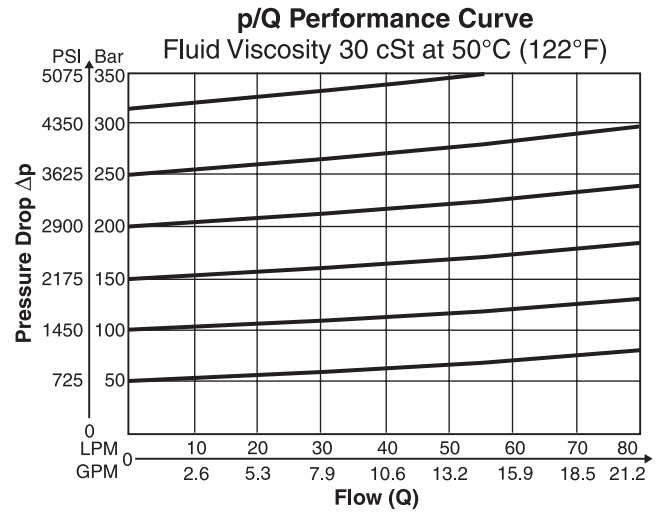
Denison Sandwich.indd, dd



**ZDV-P/A/B/ABS01**

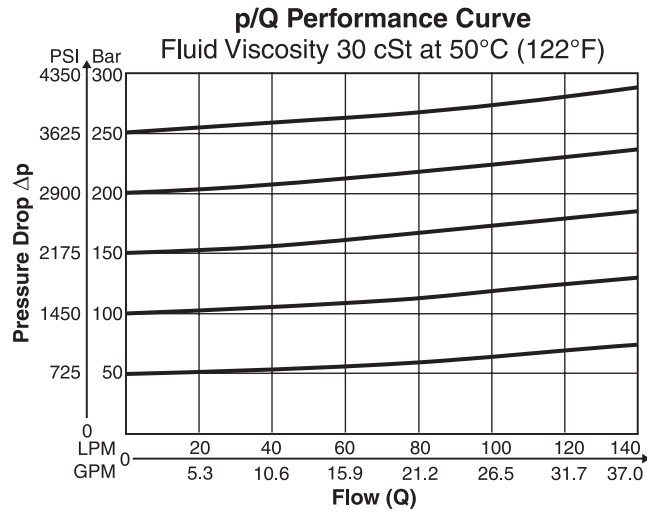


**ZDV-AB01**

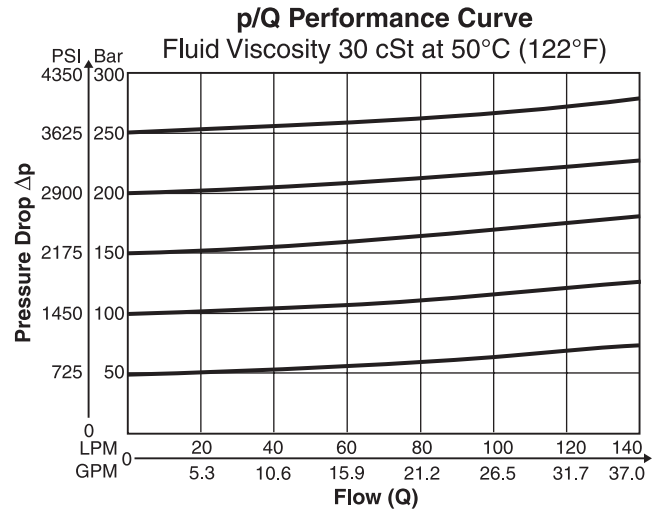


**B**

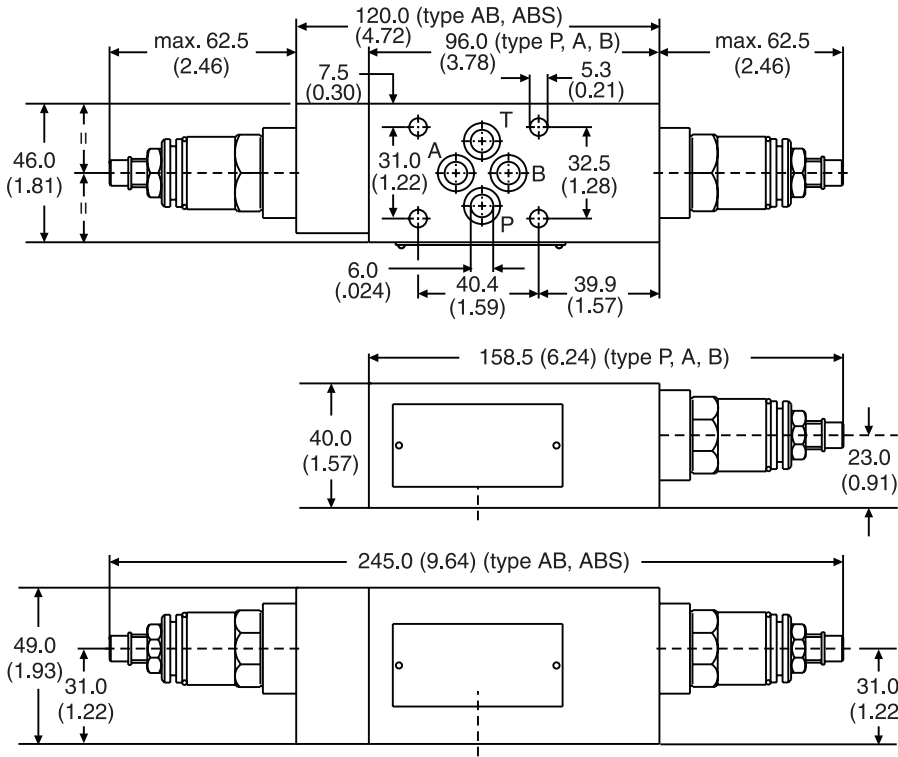
**ZDV-P/A/B/AB02**



**ZDV-ASB02**

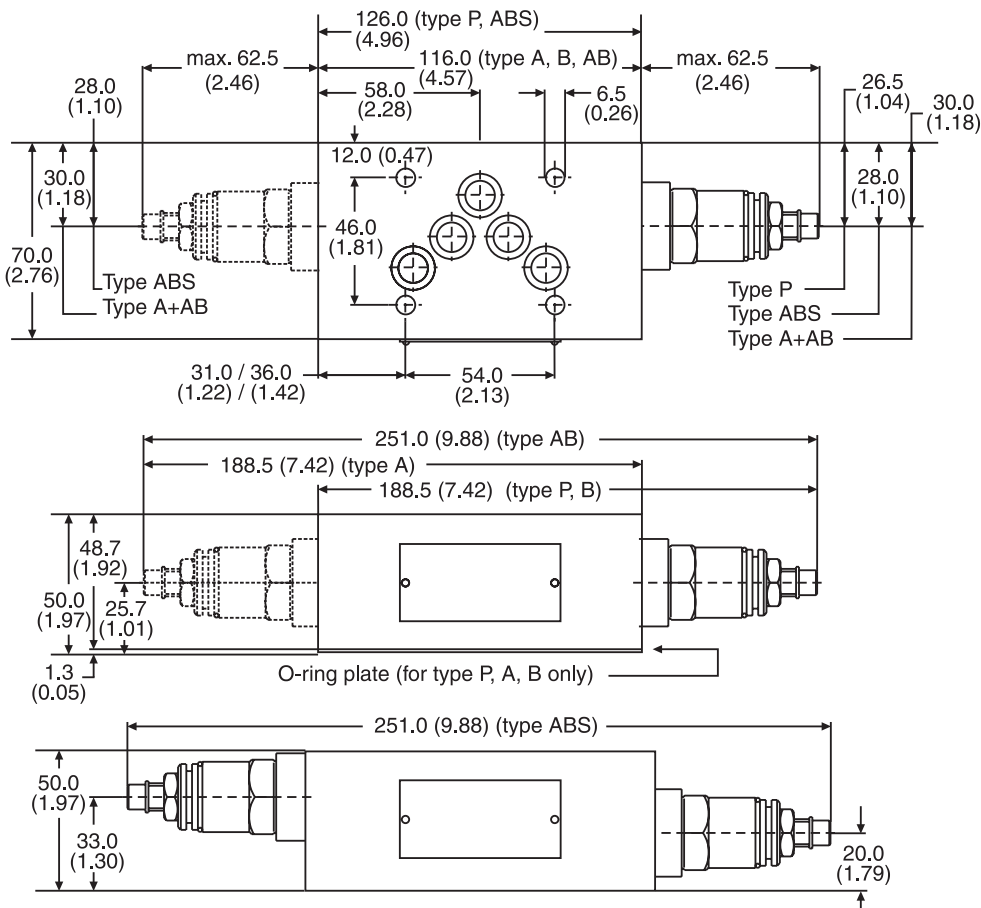


**ZDV01** – Inch equivalents for millimeter dimensions are shown in (\*\*)



Seal Kit	
Seal	Order Code
1	098-91182-0
5	098-91183-0
Complete Cartridge	
Seal	Order Code
1	098-91116-0
5	098-91117-0

**ZDV02** – Inch equivalents for millimeter dimensions are shown in (\*\*)



Seal Kit	
Seal	Order Code
1	098-91076-0
5	098-91077-0
Complete Cartridge	
Seal	Order Code
1	098-91116-0
5	098-91117-0